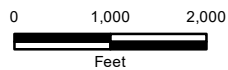


Legend

Project Area +/- 25.72 ac.



Sources: ESRI Topographic Basemap

Information represented on this map is for planning purposes only.

CARTER ENVIRONMENTAL SERVICES, INC.



7 Waldo Street
St. Augustine, FL 32084
904-540-1786

www.carterenv.com

Location Map

Victoria Preserve - Phase II



Project: 5.16264

Duval County, FL



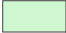


Date: Dec 12 2016

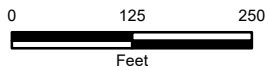
Figure:

1



Legend

-  Project Area +/- 25.72 ac.
-  Approximate Wetlands +/- 6.7 ac.
-  Ditch +/- 0.71 ac.
-  Pine-Mesic Oak +/- 18.32 ac.
-  GPS/Wetland Points 12-15-16



Sources: ESRI Color Aerial Basemap

Information represented on this map is for planning purposes only.

CARTER ENVIRONMENTAL SERVICES, INC.



7 Waldo Street
St. Augustine, FL 32084
904-540-1786

www.carterenv.com

Existing Conditions Map
Victoria Preserve - Phase II

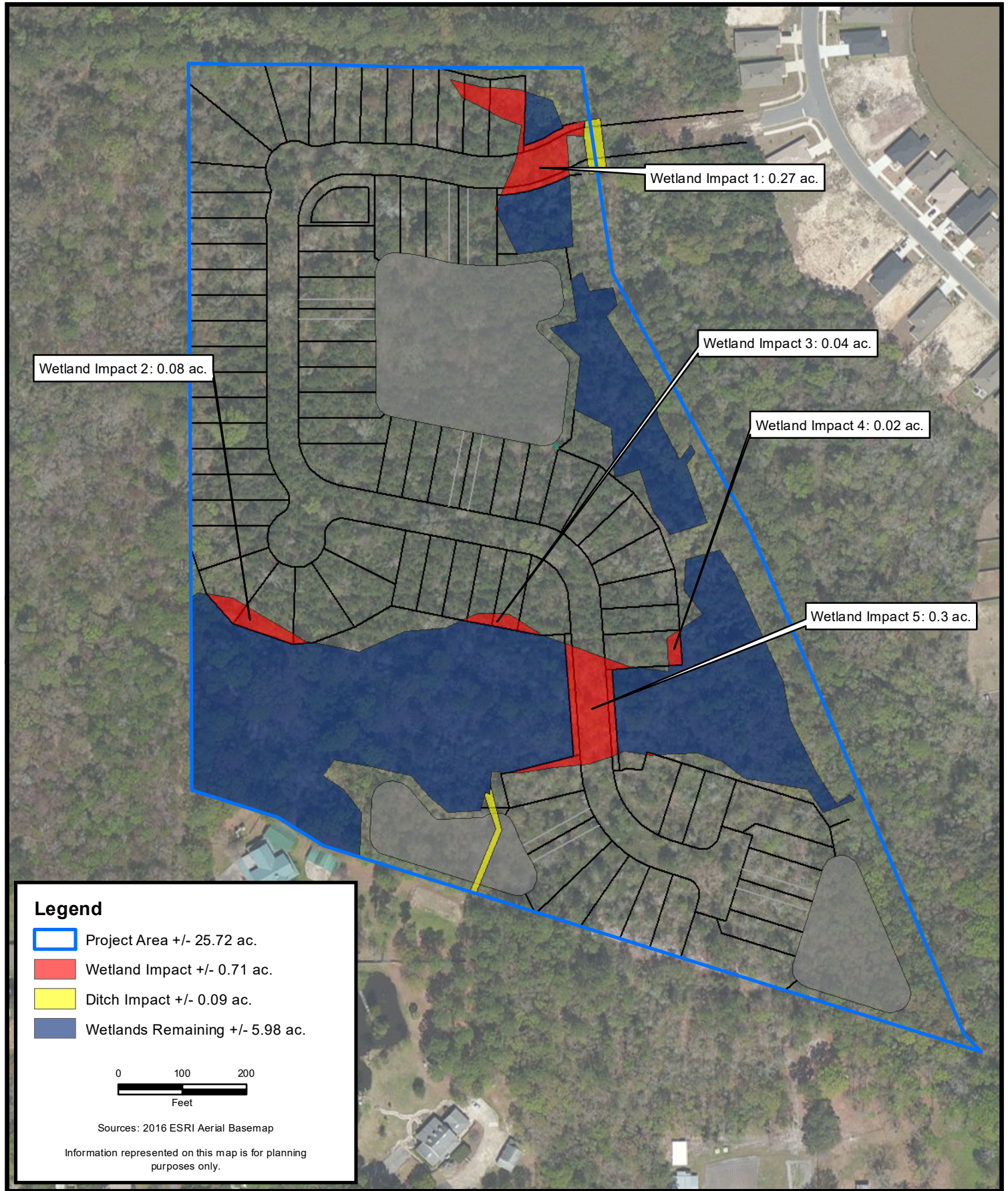
Project: 5.16264

Duval County, FL

Date: Jan 18 2017

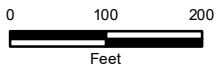
Figure: 3





Legend

- Project Area +/- 25.72 ac.
- Wetland Impact +/- 0.71 ac.
- Ditch Impact +/- 0.09 ac.
- Wetlands Remaining +/- 5.98 ac.



Sources: 2016 ESRI Aerial Basemap

Information represented on this map is for planning purposes only.

CARTER ENVIRONMENTAL SERVICES, INC.



7 Waldo Street
St. Augustine, FL 32084
904-540-1786

www.carterenv.com

Proposed Site Conditions Map
Victoria Preserve - Phase II

Project: 5.16264

Duval County, FL

Date: Feb 06 2017

Figure:

4

